

MOVING YOU FURTHER

HX260L

With Tier 4 final / Stage IV Engine installed



*Photo may include optional equipment.

Net Power

SAE J1349 / 133 kW (179 HP) at 1,950 rpm

Gross Power

SAE J1995 / 142 kW (190 HP) at 1,950 rpm

Travel Speed

5.6 km/hr (3.5 mph) / 3.3 km/hr (2.1 mph)

Operating Weight

25,600 kg / 56,440 lb



RULE THE GROUND

The HX Series excavators are products of HHI's spirit of initiative, creativity and strong drive. HHI's engineers, who are the best in the industry, have worked tirelessly to offer a zero-defect product. The new HX Series reflects customers' needs in the field gleaned by thorough monitoring. They maximize fuel efficiency and performance proven by rigorous field tests and quality control.



*Photo may include optional equipment.

RULE THE GROUND

The HX series exceeds customers' expectation!
Become a true leader on the ground with HHI's HX series.

HX260L



WORK MAX, WORTH MAX

- ECO Gauge
- IPC (Intelligent Power Control)
- New Variable Power Control
- Electronic Viscous Fan Clutch
- Attachment Flow Control (Option)
- New Cooling System with Increased Air Flow
- Enlarged Air Inlet with Grill Cover
- One Pedal Travel Straight (Option)
- Cycle Time Improvement
- Boom Floating Control (Option)



MORE RELIABLE, MORE SUSTAINABLE

- Durable Cooling Module
- Reinforced Pin, Bush and Polymer Shim
- Reinforced Durability of Upper and Lower Structure and Attachments
- Wear Resistant Cover Plate
- Hi-grade (High-pressure) Hoses



INFOTAINMENT FRONTIER

- Intelligent and Wide Cluster
- Haptic Control
- Wi-Fi Direct with Smart Phone (Miracast)
- Proportional Auxiliary Hydraulic System
- New Audio System
- New Air Conditioning System



MODERN COMFORT, SIMPLE AND SAFE SOLUTION

- AAVM (Advanced Around View Monitoring) Camera System (Option)
- Easy Access to DEF/AdBlue® Supply System
- Hi MATE (Remote Management System)
- Cab Suspension Mount
- Swing Lock System (Option)
- Fine Swing Control (Option)



*Photo may include optional equipment.



UP to 6%

More fuel-efficient
in leveling
(Compared to 9 Series)

6%

Faster truck loading
(Compared to 9 Series)

UP to 5%

Faster leveling
(Compared to 9 Series)

90%

Reduction in PM & NOx
(Compared to 9 Series)

Fuel Rate Information



*Photo may include optional equipment.

Cycle Time Improvement

The HX Series provides higher productivity on the site by faster operation: it loads trucks up to 6% faster and levels up to 5% faster than the 9 Series.

Boom Floating Control (Option)

In order to achieve efficient leveling work by arm-in and arm-out operation with the boom fixed, the HX Series applies boom floating control, allowing stable operation even in high-load work.

WORK MAX, WORTH MAX

Fuel Efficient System, Allows Great Performance

The HX Series has an eco-friendly, high-performance engine which ensures both excellent fuel efficiency and high power. With outstanding operating performance proven by rigorous tests at various work sites, it will satisfy any customer's needs.



ECO Gauge

ECO Gauge enable economic operation of machines. The gauge level and color displays engine torque and fuel efficiency level. On top of that, the status of fuel consumption such as average rate and the total amount of fuel consumed are displayed. Hourly and daily based fuel consumption can be checked in the detailed menu as well.



IPC (Intelligent Power Control)

The IPC controls power control depending on work environments. Its mode can be selected and released on the monitor. On the excavation mode, pump flow can be easily controlled by a lever, reducing fuel consumption.

New Variable Power Control

The HX Series minimizes equipment input and output control signals to improve fuel efficiency. Its three-stage Power mode ensures the highest performance in any operating environment.

* P (power) mode: Maximizes speed and power of the equipment for heavy load work.

* S (standard) mode: Optimizes performance and fuel efficiency of the equipment for general load work.

* E (economy) mode: Improves the control system for light load work.

Electronic Viscous Fan Clutch

The electronic fan clutch reduces noise during operation by precisely controlling RPM depending on the hydraulic oil and coolant temperature of the working vehicle, and minimizes fuel consumption. It is also possible to shorten the warm up time of hydraulic oil.



Attachment Flow Control (Option)

The HX Series improves pump flow rate by independent control of two pumps. It optimizes attachments for effective flow rate setting depending on attachments (ten breaker types and ten crusher types), enabling various operations matching the site environments.



Enlarged Air Inlet with Grill Cover

Enlarged vent hole of the air inlet side cover and fine net grill to prevent penetration of foreign materials further improve durability.

One Pedal Travel Straight (Option)

One Pedal Travel Straight (Option) is available for customers' convenience when long distance traveling or combination of attachment work with traveling is necessary.

New Cooling System with Increased Air Flow

With the three-floor stacked cooling module improving air inflow, the HX Series provides excellent cooling performance by increasing heat dissipation and can be easily cleaned.

MORE RELIABLE, MORE SUSTAINABLE

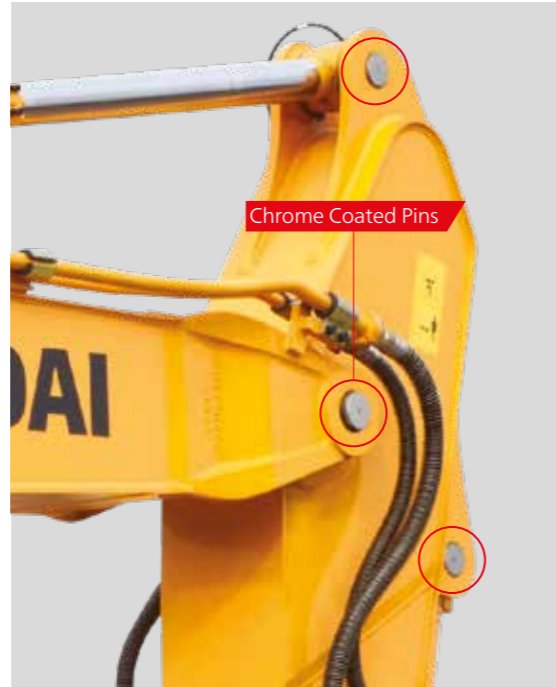
New Exterior Design for Robustness and Safety

The true value of the HX Series lies in its durability. The robust upper and lower frame structure that can endure external shock and high-load work and the attachments whose performance was proven by rigorous tests further show the real value of the HX Series in tough working environments and promise higher productivity.



Durable Cooling Module

The HX Series has a durable cooling module that passed stringent tests, demonstrating the highest productivity in tough working environments.



Chrome Coated Pins



Reinforced Durability of Upper and Lower Structure and Attachments

The upper and lower structure and attachments of the HX Series have higher durability than demanded on the site, as proven through numerous tests including road tests and virtual simulation. The wear resistance of the bucket has been improved by use of new material.

Reinforced Pin, Bush and Polymer Shim

The HX series improves lubricity of connecting parts between the equipment and attachments. Gaps with attachments are minimized by wear-resistant long-life pins, bushes and polymer shims, supporting the highest performance with invariable durability.

Wear Resistant Cover Plate

A wear-resistant cover plate is installed at the end of the arm to minimize abrasion on the connector between the arm and the bucket. Reduction of vibration of the buckets enables more stable operation even in high-load work.



*Photo may include optional equipment.

Hi-grade (High-pressure) Hoses

The HX Series uses high-pressure hoses with improved heat and pressure resistance, greatly increasing the durability of the equipment.



Cabin space for drivers increased by **13%**
(Compared to 9 Series)

310 mm (9 Series)
340 mm (HX Series)

*Photo may include optional equipment.

New Air Conditioning System

With further improved air conditioning and heating, the HX Series increases the APTC capacity by 15% to provide a pleasant environment for operators all the time. The ventilation was designed such that warm and cool air even reach operators' faces (increasing their work satisfaction) or allowing pleasant working environment.

INFOTAINMENT FRONTIER

Enhanced Instrument Panel for Easier Monitoring

Many electronic functions are concentrated on the most convenient spot for operators to ensure work efficiency. The highly-advanced infotainment system, a product of HHI's intensive information technology, enables both productivity and pleasant work at the same time! The HX Series of HHI provides higher value and pleasure to customers.



Intelligent and Wide Cluster

The 8-inch capacitive-type display (like smartphone display) of the HX Series is 30% larger than the previous model, delivering excellent legibility. The centralized switches on the display allow convenience of checking the urea level and temperature outside the cabin. The audio AUX, air conditioner and heater interoperation, and inclination sensor also maximize operator's convenience.



Haptic Control

The integrated jog shuttle-type haptic controller applies to the accelerator, remote air conditioner controller and operation of the cluster, allowing convenient operation. In the event of failure of the haptic switch, the emergency mode is activated on the cluster to ensure fail-safe function.

Wi-Fi Direct with Smart Phone (Miracast)

The Miracast system based on Wi-Fi of the operator's smart phone enables easy and convenient use of various features of the smart phone on the big screen including navigation, web surfing, viewing of videos, and listening to music. (For Android mobile phone now)



New Audio System

Radio player, USB-based MP3 player, integrated Bluetooth hands-free feature, and built-in microphone allow convenient phone calls while in work and in transit. The radio player was moved to the right side from the rear, allowing easier access.

Proportional Auxiliary Hydraulic System

- Opt: Proportional control switch for better speed control
- Enlarge the operation convenience

MODERN COMFORT, SIMPLE AND SAFE SOLUTION

New Cabin for More Comfort

Low noise, low vibration, and ergonomic design make the cabin space more comfortable and pleasant! With focus on safety and convenience of operators, the HX Series allows rapid and safe equipment inspection anytime and anywhere, providing an optimal environment for operators to work.



AAVM (Advanced Around View Monitoring) Camera System (Option)

The HX Series has a state-of-the-art AAVM video camera system to secure field of vision for operators in all directions, thereby preventing accidents. Operators can easily check the workplace in the front, rear and to the right and left.



* AAVM (Advanced Around View Monitoring): Secure field of vision in all directions by nine views including 3D bird's eye view and 2D/4CH view.

* IMOD (Intelligent Moving Object Detection): Inform when people or dangerous objects are detected within the range of operation (recognition distance: 5 m).



Easy Access to DEF/AdBlue® Supply System

The DEF/AdBlue® tank is installed inside the tool box and its inlet is remotely located for easy access and convenient supply. Warning of overfill is given by a red lamp signal. The DEF/AdBlue® supply module is attached on the side of the fuel tank for easy maintenance and filter replacement.



Hi MATE (Remote Management System)

Hi MATE, Hyundai's proprietary remote management system, provides operators and dealer service personnel access to vital service and diagnostic information on the machine from any computer with internet access. Users can pinpoint machine location using digital mapping and set machine work boundaries, reducing the need for multiple service calls. Hi MATE saves time and money for the owner and dealer by promoting preventative maintenance and reducing machine downtime.

* Operation of the system may be affected by the condition of telecommunication signal



*Photo may include optional equipment.

Cab Suspension Mount

With a low-vibration design by the coil spring and damper inside the mount, the cab suspension mount of the HX Series reduces noise inside the cabin and improves durability, providing a comfortable operation space that lessens operators' fatigue.

Swing Lock System (Option)

Swing Lock System is provided to maintain stability when swing movement needs to be limited, improving operating speed and productivity.

Fine Swing Control (Option)

Fine swing control is available for customer's convenience when users want to control fine swing.

SPECIFICATIONS

ENGINE			
Maker / Model	Cummins QSB6.7		
Type	4-cycle turbocharged, charge air cooled diesel engine		
Rated flywheel horse power	SAE	J1995 (gross)	142 kW (190 HP) at 1,950 rpm
		J1349 (net)	133 kW (179 HP) at 1,950 rpm
	DIN	6271/1 (gross)	142 kW (193 PS) at 1,950 rpm
		6271/1 (net)	133 kW (181 PS) at 1,950 rpm
Max. torque	82.5 kgf-m (597 lbf-ft) at 1,500 rpm		
Bore x stroke	107 x 124 mm (4.21" x 4.88")		
Piston displacement	6,700 cc (409 cu in)		
Batteries	2 x 12 V x 100 Ah		
Starting motor	Denso 24 V - 4.8 kW		
Alternator	Denso 24 V - 95 A		

HYDRAULIC SYSTEM	
MAIN PUMP	
Type	Variable displacement tandem axis piston pumps
Max. flow	2 x 228.2 l/min (60.3 U.S. gpm / 50.2 U.K. gpm)
Sub-pump for pilot circuit	Gear pump

Cross-sensing and fuel saving pump system

HYDRAULIC MOTORS	
Travel	Two speed axial pistons motor with brake valve and parking brake
Swing	Axial piston motor with automatic brake

RELIEF VALVE SETTING	
Implement circuits	350 kgf/cm ² (4,980 psi)
Travel	350 kgf/cm ² (4,980 psi)
Power boost (boom, arm, bucket)	380 kgf/cm ² (5,400 psi)
Swing circuit	300 kgf/cm ² (4,270 psi)
Pilot circuit	40 kgf/cm ² (569 psi)
Service valve	Installed

HYDRAULIC CYLINDERS	
No. of cylinder bore x stroke	Boom: Ø 135 x 1,345 mm
	Arm: Ø 145 x 1,620 mm
	Bucket: Ø 130 x 1,185 mm

DRIVES & BRAKES	
Drive method	Fully hydrostatic type
Drive motor	Axial piston motor, in-shoe design
Reduction system	Planetary reduction gear
Max. drawbar pull	21,100 kgf (46,500 lbf)
Max. travel speed (high / low)	5.6 km/hr (3.5 mph) / 3.3 km/hr (2.1 mph)
Gradeability	35° (70%)
Parking brake	Multi wet disc

CONTROL	
Pilot pressure operated joysticks and pedals with detachable lever provide almost effortless and fatigueless operation.	
Pilot control	Two joysticks with one safety lever (LH): Swing and arm (RH): Boom and bucket (ISO)
Traveling and steering	Two levers with pedals
Engine throttle	Electric, Dial type

SWING SYSTEM	
Swing motor	Fixed displacement axial piston motor
Swing reduction	Planetary gear reduction
Swing bearing lubrication	Grease-bathed
Swing brake	Multi wet disc
Swing speed	11.6 rpm

SERVICE REFILL CAPACITIES			
Re-filling	liter	US gal	UK gal
Fuel tank	400	106	88
Engine coolant	40	10.6	8.8
Engine oil	23	6.1	5.1
Swing device	7	1.85	1.54
Final drive (each)	6	1.6	1.3
Hydraulic system (including tank)	280	74.0	61.6
Hydraulic tank	160	41.25	35.2
DEF/AdBlue®	27	7.1	5.9

UNDERCARRIAGE
The X-leg type center frame is integrally welded with reinforced box-section track frames. The undercarriage includes lubricated rollers, idlers, track adjusters with shock absorbing springs and sprockets and a track chain with double or triple grouser shoes.

Center frame	X - leg type
Track frame	Pentagonal box type
No. of shoes on each side	51 EA
No. of carrier roller on each side	2 EA
No. of track roller on each side	9 EA
No. of rail guard on each side	2 EA

OPERATING WEIGHT (APPROXIMATE)
Operating weight, including 5,850 mm (19' 2") boom; 5,900 mm (19' 4") 2-piece boom; 3,050 mm (10' 0") arm; SAE heaped 1.08 m³ (1.41 yd³) bucket, lubricant, coolant, full fuel tank, full hydraulic tank and all standard equipments.

OPERATING WEIGHT			
Shoes		Operating weight	Ground pressure
Type	Width mm (in)	kg (lb)	kgf / cm ² (psi)
Triple grouser	600 (24")	HX260 L	25,600 (56,440) 0.52 (7.40)
		HX260 L 2-piece boom	27,750 (61,178) 0.56 (7.96)
		HX260 NL	25,500 (56,220) 0.52 (7.40)
		HX260 NL 2-piece boom	27,650 (60,958) 0.56 (7.96)
		HX260 HW	27,850 (61,400) 0.54 (7.68)
		HX260 L	25,900 (57,100) 0.45 (6.40)
	700 (28")	HX260 L 2-piece boom	28,050 (61,840) 0.49 (6.97)
		HX260 HW	28,420 (62,650) 0.47 (6.69)
		HX260 L	26,200 (57,760) 0.40 (5.69)
		HX260 L 2-piece boom	28,350 (62,501) 0.43 (6.11)
		HX260 HW	28,800 (63,490) 0.42 (5.97)
		HX260 L	26,500 (58,420) 0.36 (5.12)
800 (32")	HX260 L 2-piece boom	28,650 (63,162) 0.39 (5.55)	
	HX260 HW	29,330 (64,660) 0.49 (6.97)	
Double grouser	700 (28")	HX260 HW	29,330 (64,660) 0.49 (6.97)

BUCKET SELECTION GUIDE & DIGGING FORCE

BUCKETS

				
SAE heaped m ³ (yd ³)	1.08 (1.41)	◆ 1.27 (1.66)	◆ 1.46 (1.91)	◆ 1.16 (1.52)
	1.27 (1.66)			1.50 (1.96)

Capacity m ³ (yd ³)	Width mm (in)	Weight kg (lb)	Recommendation mm (ft.in)								
			5,850 (19' 2") Mono Boom				5,900 (19' 4") 2-piece boom				
			2,100 (6' 11") Arm	2,500 (8' 2") Arm	3,050 (10' 0") Arm	3,600 (11' 10") Arm	2,100 (6' 11") Arm	2,500 (8' 2") Arm	3,050 (10' 0") Arm		
1.08 (1.41)	0.95 (1.24)	1,170 (46.1)	1,250 (49.2)	1,020 (2,250)	●	●	●	⊙	●	●	●
1.27 (1.66)	1.11 (1.45)	1,325 (52.2)	1,410 (55.5)	1,100 (2,430)	●	⊙	⊙	○	●	●	⊙
1.50 (1.96)	1.30 (1.70)	1,515 (59.6)	1,600 (63.0)	1,180 (2,600)	●	⊙	●	-	⊙	⊙	○
◆ 1.27 (1.66)	1.11 (1.45)	1,380 (54.3)	-	1,290 (2,840)	●	⊙	○	-	●	●	⊙
◆ 1.46 (1.91)	1.28 (1.67)	1,535 (60.4)	-	1,380 (3,040)	⊙	○	○	-	⊙	⊙	○
◆ 1.16 (1.52)	1.00 (1.31)	1,285 (50.6)	-	1,380 (3,040)	●	⊙	○	-	●	●	⊙

◆ Heavy duty bucket

◆ Rock-Heavy duty bucket

● : Applicable for materials with density of 2,000 kg / m³ (3,370 lb / yd³) or less

⊙ : Applicable for materials with density of 1,600 kg / m³ (2,700 lb / yd³) or less

○ : Applicable for materials with density of 1,100 kg / m³ (1,850 lb / yd³) or less

ATTACHMENT

Booms and arms are welded with a low-stress, full-box section design. 5.85 m (19' 2") Boom and 5.9 m (19' 4") 2-piece boom and 2.1 m (6' 11"); 2.5 m (8' 2"); 3.05 m (10' 0") & 3.6 m (11' 10") Arms are available.

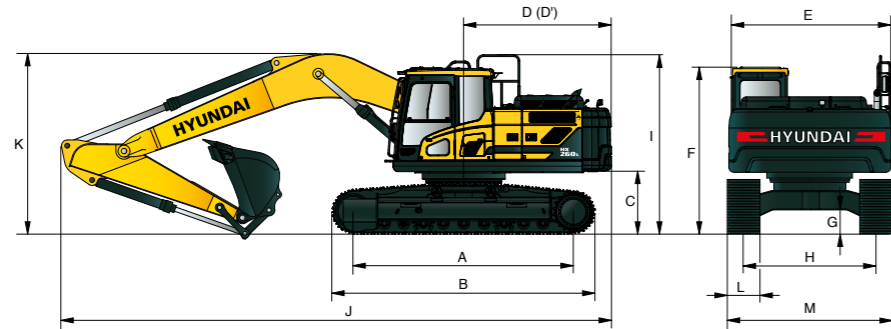
DIGGING FORCE							Remarks:
Boom	Length	mm (ft.in)	5,850 (19' 2")				
	Weight	kg (lb)	2,460 (5,420)				
Arm	Length	mm (ft.in)	2,100 (6' 11")	2,500 (8' 2")	3,050 (10' 0")	3,600 (11' 10")	
	Weight	kg (lb)	1,420 (3,130)	1,450 (3,200)	1,540 (3,400)	1,600 (3,530)	
Bucket digging force	SAE	kN	156.9 [170.4]	156.9 [170.4]	156.9 [170.4]	156.9 [170.4]	
		kgf	16000 [17370]	16000 [17370]	16000 [17370]	16000 [17370]	
		lbf	35270 [38290]	35270 [38290]	35270 [38290]	35270 [38290]	
	ISO	kN	178.5 [193.8]	178.5 [193.8]	178.5 [193.8]	178.5 [193.8]	
		kgf	18200 [19760]	18200 [19760]	18200 [19760]	18200 [19760]	
		lbf	40120 [43560]	40120 [43560]	40120 [43560]	40120 [43560]	
Arm crowd force	SAE	kN	134.4 [145.9]	130.4 [141.6]	114.7 [124.6]	104.0 [112.9]	
		kgf	13700 [14870]	13300 [14440]	11700 [12700]	10600 [11510]	
		lbf	30200 [32790]	29320 [31830]	25790 [28000]	23370 [25370]	
	ISO	kN	139.3 [151.2]	134.4 [145.9]	118.7 [128.8]	107.9 [117.1]	
		kgf	14200 [15420]	13700 [14870]	12100 [13140]	11000 [11940]	
		lbf	31310 [33990]	30200 [32790]	26680 [28970]	24250 [26330]	

Note : Boom weight includes arm cylinder, piping, and pin
Arm weight includes bucket cylinder, linkage, and pin

DIMENSIONS & WORKING RANGE

HX260 L / HX260 NL DIMENSIONS

5.85 m (20' 6") BOOM and 2.1 m (6' 11"); 2.5 m (8' 2"); 3.05 m (10' 0") & 3.6 m (11' 10") ARM



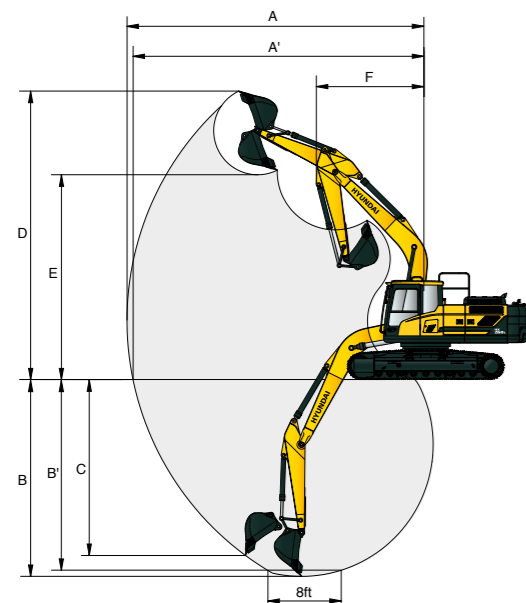
Unit : mm (ft-in)

A	Tumbler distance	3,830 (12' 7")
B	Overall length of crawler	4,680 (15' 4")
C	Ground clearance of counterweight	1,115 (3' 8")
D	Tail swing radius	2,975 (9' 9")
D'	Rear-end length	2,870 (9' 5")
E	Overall width of upperstructure	2,840 (9' 4")
F	Overall height of cab	3,050 (10' 0")
G	Min. ground clearance	480 (1' 7")
H	Track gauge	HX260 L 2,580 (8' 6") HX260 NL 2,380 (7' 10")
I	Overall height of guardrail	3,260 (10' 7")

Boom length	5,850 (19' 2")				
Arm length	2,100 (6' 11")	2,500 (8' 2")	3,050 (10' 0")	3,600 (11' 10")	
J Overall length	10,050 (32' 12")	10,000 (32' 10")	9,920 (32' 7")	9,910 (32' 6")	
K Overall height of boom	3,530 (11' 7")	3,590 (11' 9")	3,220 (10' 7")	3,590 (11' 9")	
L Track shoe width	600 (24")	700 (28")	800 (32")	900 (36")	
M Overall width	HX260 L	3,180 (10' 5")	3,280 (10' 9")	3,380 (11' 1")	3,480 (11' 5")
	HX260 NL	2,980 (9' 9")	3,080 (10' 2")	3,180 (10' 5")	3,280 (10' 9")

HX260 L / HX260 NL WORKING RANGE

Unit : mm (ft-in)

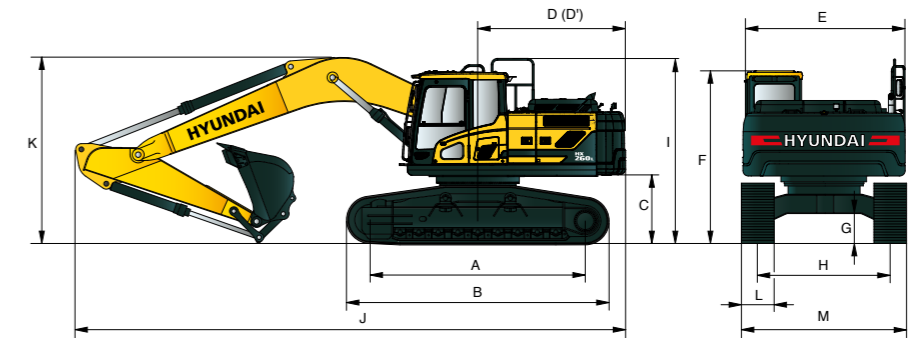


Boom length	5,850 (19' 2")			
Arm length	2,100 (6' 11")	2,500 (8' 2")	3,050 (10' 0")	3,600 (11' 10")
A Max. digging reach	9,550 (31' 4")	9,870 (32' 5")	10,360 (34' 0")	10,870 (35' 8")
A' Max. digging reach on ground	9,360 (30' 9")	9,680 (31' 9")	10,190 (33' 5")	10,700 (35' 1")
B Max. digging depth	6,050 (19' 10")	6,450 (21' 2")	7,000 (23' 0")	7,550 (24' 9")
B' Max. digging depth (8' level)	5,840 (19' 2")	6,260 (20' 6")	6,830 (22' 5")	7,400 (24' 3")
C Max. vertical wall digging depth	5,480 (18' 0")	5,640 (18' 6")	6,150 (20' 2")	6,830 (22' 5")
D Max. digging height	9,450 (31' 0")	9,460 (31' 0")	9,670 (31' 9")	9,920 (32' 7")
E Max. dumping height	6,360 (20' 10")	6,420 (21' 1")	6,630 (21' 9")	6,860 (22' 6")
F Min. front swing radius	4,420 (14' 6")	4,200 (13' 9")	3,980 (13' 1")	3,900 (12' 10")

DIMENSIONS & WORKING RANGE

HX260 L HIGH WALKER DIMENSIONS

5.85 m (19' 2") BOOM and 2.1 m (6' 11"); 2.5 m (8' 2"); 3.05 m (10' 0") & 3.6 m (11' 10") ARM



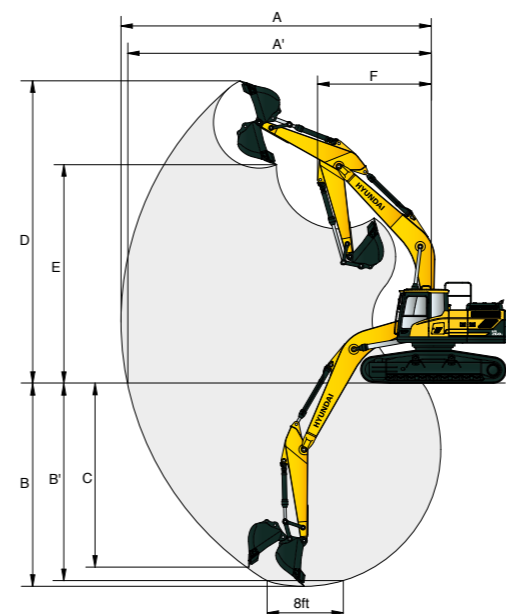
Unit : mm (ft-in)

A	Tumbler distance	4,030 (13' 3")
B	Overall length of crawler	4,880 (16' 0")
C	Ground clearance of counterweight	1,470 (4' 10")
D	Tail swing radius	2,975 (9' 9")
D'	Rear-end length	2,870 (9' 5")
E	Overall width of upperstructure	2,840 (9' 4")
F	Overall height of cab	3,420 (11' 2")
G	Min. ground clearance	765 (2' 6")
H	Track gauge	2,790 (9' 2")
I	Overall height of guardrail	3,625 (11' 9")

Boom length	5,850 (19' 2")				
Arm length	2,100 (6' 11")	2,500 (8' 2")	3,050 (10' 0")	3,600 (11' 10")	
J Overall length	10,060 (33' 0")	9,970 (32' 9")	9,760 (32' 0")	9,930 (32' 7")	
K Overall height of boom	3,610 (11' 10")	3,750 (12' 4")	3,240 (10' 8")	3,620 (11' 11")	
L Track shoe	Type	Triple grouser			Double grouser
	Width	600 (24")	700 (28")	800 (32")	700 (28")
M Overall width	3,390 (11' 1")	3,490 (11' 5")	3,590 (11' 9")	3,490 (11' 5")	

HX260 L HIGH WALKER WORKING RANGE

Unit : mm (ft-in)

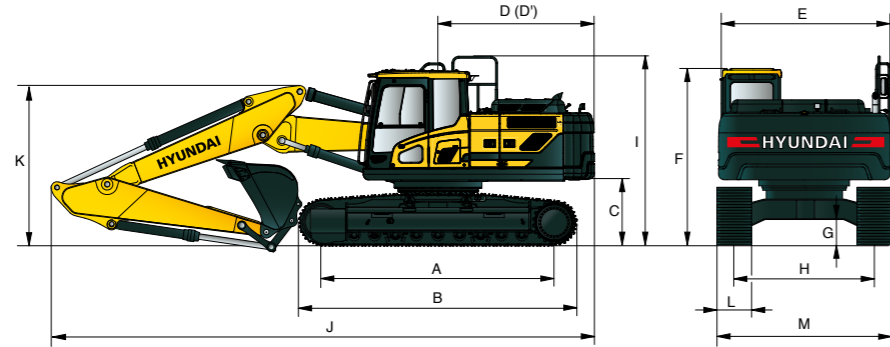


Boom length	5,850 (19' 2")			
Arm length	2,100 (6' 11")	2,500 (8' 2")	3,050 (10' 0")	3,600 (11' 10")
A Max. digging reach	9,550 (31' 4")	9,870 (32' 5")	10,360 (34' 0")	10,870 (35' 8")
A' Max. digging reach on ground	9,280 (30' 5")	9,160 (30' 1")	10,110 (33' 2")	10,360 (34' 0")
B Max. digging depth	5,680 (18' 8")	6,080 (19' 11")	6,630 (21' 9")	7,180 (23' 7")
B' Max. digging depth (8' level)	5,470 (17' 11")	5,890 (19' 4")	6,460 (21' 2")	7,030 (23' 1")
C Max. vertical wall digging depth	5,120 (16' 10")	5,300 (17' 5")	5,790 (19' 0")	6,470 (21' 3")
D Max. digging height	9,820 (32' 3")	9,840 (32' 3")	10,040 (32' 11")	10,280 (33' 9")
E Max. dumping height	6,730 (22' 1")	6,790 (22' 3")	7,000 (23' 0")	7,220 (23' 8")
F Min. front swing radius	4,140 (13' 7")	4,030 (13' 3")	3,940 (12' 11")	3,900 (12' 10")

DIMENSIONS & WORKING RANGE

HX260 L 2-PIECE BOOM DIMENSIONS

5.85 m (20' 6") 2-PIECE BOOM and 2.1 m (6' 11"); 2.5 m (8' 2"); 3.05 m (10' 0") & 3.6 m (11' 10") ARM

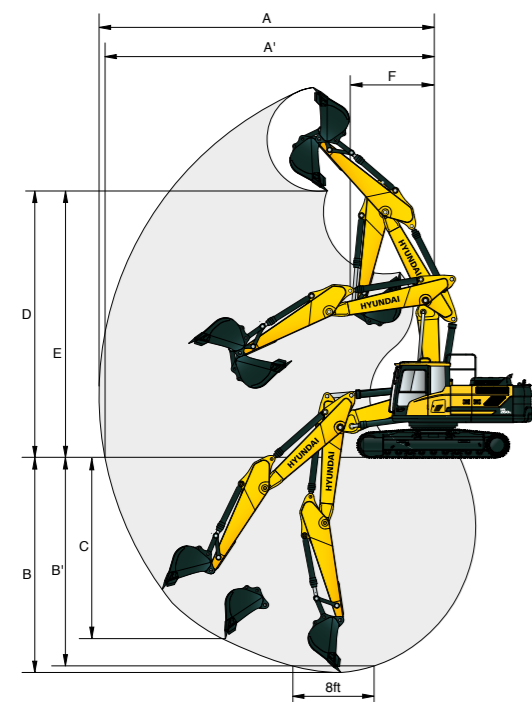


Unit : mm (ft-in)

A	Tumbler distance	3,830 (12' 7")
B	Overall length of crawler	4,680 (15' 4")
C	Ground clearance of counterweight	1,115 (3' 8")
D	Tail swing radius	2,975 (9' 9")
D'	Rear-end length	2,870 (9' 5")
E	Overall width of upperstructure	2,840 (9' 4")
F	Overall height of cab	3,050 (10' 0")
G	Min. ground clearance	480 (1' 7")
H	Track gauge	HX260 L 2,580 (8' 6") HX260 NL 2,380 (7' 10")
I	Overall height of guardrail	3,260 (10' 7")

Boom length	5,850 (19' 2")				
Arm length	2,100 (6' 11")	2,500 (8' 2")	3,050 (10' 0")	3,600 (11' 10")	
J Overall length	10,110 (33' 2")	10,010 (32' 10")	9,990 (32' 9")	9,930 (32' 7")	
K Overall height of boom	3,320 (10' 11")	3,260 (10' 8")	3,210 (10' 6")	3,590 (11' 9")	
L Track shoe width	600 (24")	700 (28")	800 (32")	900 (36")	
M Overall width	HX260 L	3,180 (10' 5")	3,280 (10' 9")	3,380 (11' 1")	3,480 (11' 5")
	HX260 NL	2,980 (9' 9")	3,080 (10' 2")	3,180 (10' 5")	3,280 (10' 9")

HX260 L / HX260 NL WORKING RANGE



Unit : mm (ft-in)

Boom length	5,850 (19' 2")			
Arm length	2,100 (6' 11")	2,500 (8' 2")	3,050 (10' 0")	3,600 (11' 10")
A Max. digging reach	9,660 (31' 8")	9,900 (32' 9")	10,500 (34' 5")	11,020 (36' 2")
A' Max. digging reach on ground	9,470 (31' 1")	9,810 (32' 2")	10,320 (33' 10")	10,850 (35' 7")
B Max. digging depth	5,750 (18' 10")	6,120 (20' 1")	6,660 (21' 10")	7,200 (23' 8")
B' Max. digging depth (8' level)	5,840 (19' 2")	6,260 (20' 6")	6,830 (22' 5")	7,400 (24' 3")
C Max. vertical wall digging depth	4,780 (15' 8")	5,100 (16' 9")	5,620 (18' 5")	6,230 (20' 5")
D Max. digging height	10,880 (35' 8")	11,090 (36' 5")	11,470 (37' 8")	11,870 (38' 11")
E Max. dumping height	7,660 (25' 2")	7,870 (25' 10")	8,250 (27' 1")	6,640 (21' 10")
F Min. front swing radius	3,280 (10' 9")	2,990 (9' 10")	2,730 (8' 11")	3,100 (10' 2")

LIFTING CAPACITY

Rating over-front Rating over-side or 360 degrees

HX260 L

5.85 m (19' 2") boom; 2.10 m (6' 11") arm equipped with 1.08 m³ (SAE heaped) bucket and 600 mm (24") triple grouser shoes.

Load point height m (ft)	Load radius								At max. reach		
	3.0 m (10 ft)		4.5 m (15 ft)		6.0 m (20 ft)		7.5 m (25 ft)		Capacity	Reach	
7.5 m (25 ft)	kg								*7270	7230	5.55
	lb								*16030	15940	(18.2)
6.0 m (20 ft)	kg				*7010	6340			*7110	5140	6.77
	lb				*15450	13980			*15670	11330	(22.2)
4.5 m (15 ft)	kg		*9290	*9290	*7660	6110			6630	4260	7.49
	lb		*20480	*20480	*16890	13470			14620	9390	(24.6)
3.0 m (10 ft)	kg				*8720	5790	6490	4140	6020	3840	7.86
	lb				*19220	12760	14310	9130	13270	8470	(25.8)
1.5 m (5 ft)	kg				8900	5500	6350	4010	5850	3700	7.93
	lb				19620	12130	14000	8840	12900	8160	(26.0)
Ground Line	kg		13980	8070	8720	5340	6270	3940	6040	3800	7.70
	lb		30820	17790	19220	11770	13820	8690	13320	8380	(25.3)
-1.5 m (-5 ft)	kg		*13690	8100	8690	5320			6730	4210	7.16
	lb		*30180	17860	19160	11730			14840	9280	(23.5)
-3.0 m (-10 ft)	kg	*16700	*16700	*12340	8270	8870	5470		8460	5250	6.20
	lb	*36820	*36820	*27210	18230	19550	12060		18650	11570	(20.4)
-4.5 m (-15 ft)	kg										
	lb										

5.85 m (19' 2") boom; 2.50 m (8' 2") arm equipped with 1.08 m³ (SAE heaped) bucket and 600 mm (24") triple grouser shoes.

Load point height m (ft)	Load radius								At max. reach			
	3.0 m (10 ft)		4.5 m (15 ft)		6.0 m (20 ft)		7.5 m (25 ft)		Capacity	Reach		
7.5 m (25 ft)	kg								*6080	*6080	6.00	
	lb								*13400	*13400	(19.7)	
6.0 m (20 ft)	kg				*6490	6430			*5650	4750	7.14	
	lb				14310	14180			*12460	10470	(23.4)	
4.5 m (15 ft)	kg		*8580	*8580	*7230	6180	6670	4300	*5580	3990	7.82	
	lb		*18920	*18920	15940	13620	14700	9480	*12300	8800	(25.7)	
3.0 m (10 ft)	kg		*11080	8940	*8340	5840	6520	4160	5670	3610	8.18	
	lb		*24430	19710	18390	12870	14370	9170	12500	7960	(26.8)	
1.5 m (5 ft)	kg		*13130	8330	8940	5530	6360	4010	5500	3480	8.25	
	lb		*28950	18360	19710	12190	14020	8840	12130	7670	(27.1)	
Ground Line	kg		13980	8060	8720	5340	6240	3910	5660	3550	8.03	
	lb		30820	17770	19220	11770	13760	8620	12480	7830	(26.3)	
-1.5 m (-5 ft)	kg	*11520	*11520	*13870	8040	8650	5270	6240	3900	6230	3900	7.51
	lb	*25400	*25400	*30580	17730	19070	11620	13760	8600	13730	8600	(24.6)
-3.0 m (-10 ft)	kg	*17880	16500	*12820	8170	8750	5360		7610	4730	6.61	
	lb	*39420	36380	*28260	18010	19290	11820		16780	10430	(21.7)	
-4.5 m (-15 ft)	kg			*10090	8530				*8520	7080	5.12	
	lb			*22240	18810				*18780	15610	(16.8)	

- Lifting capacity are based on SAE J1097 and ISO 10567.
- Lifting capacity of the HX series does not exceed 75% of tipping load with the machine on firm, level ground or 87% of full hydraulic capacity.
- The load point is a hook located on the back of the bucket.
- (*) indicates load limited by hydraulic capacity.

LIFTING CAPACITY

Rating over-front Rating over-side or 360 degrees

HX260 L

5.85 m (19' 2") boom; 3.05 m (10' 0") arm equipped with 1.08 m³ (SAE heaped) bucket and 600 mm (24") triple grouser shoes.

Load point height m (ft)	Load radius										At max. reach			
	1.5 m (5 ft)		3.0 m (10 ft)		4.5 m (15 ft)		6.0 m (20 ft)		7.5 m (25 ft)		Capacity		Reach	
													m (ft)	
7.5 m (25 ft)	kg										*4010	*4010	6.66	
	lb										*8840	*8840	(21.8)	
6.0 m (20 ft)	kg							*4710	4420		*3760	*3760	7.70	
	lb							*10380	9740		*8290	*8290	(25.3)	
4.5 m (15 ft)	kg					*6560	6270	*6140	4340		*3720	3590	8.34	
	lb					*14460	13820	*13540	9570		*8200	7910	(27.4)	
3.0 m (10 ft)	kg				*10040	9160	*7740	5910	6540	4170	*3830	3270	8.67	
	lb				*22130	20190	*17060	13030	14420	9190	*8440	7210	(28.5)	
1.5 m (5 ft)	kg				*12360	8430	*8950	5550	6350	3990	*4090	3150	8.74	
	lb				*27250	18580	*19730	12240	14000	8800	*9020	6940	(28.7)	
Ground Line	kg		*6350	*6350	*13650	8040	8700	5310	6200	3860	*4570	3200	8.53	
	lb		*14000	*14000	*30090	17730	19180	11710	13670	8510	*10080	7050	(28.0)	
-1.5 m (-5 ft)	kg	*7170	*7170	*11190	*11190	13840	7930	8570	5190	6130	3800	*5400	3460	8.04
	lb	*15810	*15810	*24670	*24670	30510	17480	18890	11440	13510	8380	*11900	7630	(26.4)
-3.0 m (-10 ft)	kg	*12120	*12120	*17600	16150	*13270	8000	8600	5220			6570	4080	7.21
	lb	*26720	*26720	*38800	35600	*29260	17640	18960	11510			14480	8990	(23.7)
-4.5 m (-15 ft)	kg			*16000	*16000	*11330	8260					*8180	5610	5.88
	lb			*35270	*35270	*24980	18210					*18030	12370	(19.3)

5.85 m (19' 2") boom; 3.60 m (11' 10") arm equipped with 1.08 m³ (SAE heaped) bucket and 600 mm (24") triple grouser shoes.

Load point height m (ft)	Load radius										At max. reach					
	1.5 m (5 ft)		3.0 m (10 ft)		4.5 m (15 ft)		6.0 m (20 ft)		7.5 m (25 ft)		9.0 m (30 ft)		Capacity		Reach	
															m (ft)	
7.5 m (25 ft)	kg												*3470	*3470	7.32	
	lb												*7650	*7650	(24.0)	
6.0 m (20 ft)	kg								*5150	4500			*3280	*3280	8.27	
	lb								*11350	9920			*7230	*7230	(27.1)	
4.5 m (15 ft)	kg							*5870	*5870	*5590	4380			*3250	3220	8.87
	lb							*12940	*12940	*12320	9660			*7170	7100	(29.1)
3.0 m (10 ft)	kg				*8940	*8940	*7100	5980	*6220	4190	*4240	3070	*3340	2950	9.19	
	lb				*19710	*19710	*15650	13180	*13710	9240	*9350	6770	*7360	6500	(30.1)	
1.5 m (5 ft)	kg				*11460	8550	*8400	5580	6340	3980	4760	2970	*3540	2840	9.25	
	lb				*25260	18850	*18520	12300	13980	8770	10490	6550	*7800	6260	(30.3)	
Ground Line	kg		*7080	*7080	*13130	8030	8680	5280	6160	3810	*4310	2900	*3910	2870	9.05	
	lb		*15610	*15610	*28950	17700	19140	11640	13580	8400	*9500	6390	*8620	6330	(29.7)	
-1.5 m (-5 ft)	kg	*6430	*6430	*10500	*10500	13720	7820	8490	5110	6050	3720		*4550	3070	8.60	
	lb	*14180	*14180	*23150	*23150	30250	17240	18720	11270	13340	8200		*10030	6770	(28.2)	
-3.0 m (-10 ft)	kg	*10430	*10430	*15460	*15460	*13510	7820	8470	5090	6070	3730		*5720	3530	7.82	
	lb	*22990	*22990	*34080	*34080	*29780	17240	18670	11220	13380	8220		*12610	7780	(25.7)	
-4.5 m (-15 ft)	kg	*15500	*15500	*17530	16210	*12140	8020	8630	5230				7460	4590	6.62	
	lb	*34170	*34170	*38650	35740	*26760	17680	19030	11530				16450	10120	(21.7)	
-6.0 m (-20 ft)	kg															
	lb															

1. Lifting capacity are based on SAE J1097 and ISO 10567.
2. Lifting capacity of the HX series does not exceed 75% of tipping load with the machine on firm, level ground or 87% of full hydraulic capacity.

3. The load point is a hook located on the back of the bucket.
4. (*) indicates load limited by hydraulic capacity.

LIFTING CAPACITY

Rating over-front Rating over-side or 360 degrees

HX260 NL

5.85 m (19' 2") boom; 2.10 m (6' 11") arm equipped with 1.08 m³ (SAE heaped) bucket and 600 mm (24") triple grouser shoes.

Load point height m (ft)	Load radius										At max. reach												
	3.0 m (10 ft)		4.5 m (15 ft)		6.0 m (20 ft)		7.5 m (25 ft)		Capacity		Reach												
													m (ft)										
7.5 m (25 ft)	kg												*7280	6700	5.50								
	lb												*16050	14770	(18.1)								
6.0 m (20 ft)	kg									*7000	5800			*7110	4730	6.74							
	lb									*15430	12790			*15670	10430	(22.1)							
4.5 m (15 ft)	kg									*9230	8700			*7640	5580	7.47							
	lb									*20350	19180			*16840	12300	(24.5)							
3.0 m (10 ft)	kg												*8690	5260	6470	3760	6010	3490	7.85				
	lb												*19160	11600	14260	8290	13250	7690	(25.8)				
1.5 m (5 ft)	kg													8870	4980	6330	3640	5820	3350	7.93			
	lb													19550	10980	13960	8020	12830	7390	(26.0)			
Ground Line	kg									13920	7220			8690	4820	6240	3560	6000	3430	7.72			
	lb									30690	15920			19160	10630	13760	7850	13230	7560	(25.3)			
-1.5 m (-5 ft)	kg													*13710	7240	8650	4790	6670	3800	7.18			
	lb													*30230	15960	19070	10560	14700	8380	(23.6)			
-3.0 m (-10 ft)	kg													*16780	14630	*12390	7410	8820	4940	8350	4710	6.24	
	lb													*36990	32250	*27320	16340	19440	10890	18410	10380	(20.5)	
-4.5 m (-15 ft)	kg																						
	lb																						

5.85 m (19' 2") boom; 2.50 m (8' 2") arm equipped with 1.08 m³ (SAE heaped) bucket and 600 mm (24") triple grouser shoes.

Load point height m (ft)	Load radius										At max. reach												
	3.0 m (10 ft)		4.5 m (15 ft)		6.0 m (20 ft)		7.5 m (25 ft)		Capacity		Reach												
													m (ft)										
7.5 m (25 ft)	kg													*6100	5960	5.96							
	lb													*13450	13140	(19.5)							
6.0 m (20 ft)	kg													*6480	5890	7.11							
	lb													*14290	12990	(23.3)							
4.5 m (15 ft)	kg													*8510	*8510	*7200	5650	6650	3920	*5580	3640	7.81	
	lb													*18760	*18760	*15870	12460	14660	8640	*12300	8020	(25.6)	
3.0 m (10 ft)	kg													*11010	8090	*8310	5320	6500	3790	5650	3290	8.17	
	lb													*24270	17840	*18320	11730	14330	8360	12460	7250	(26.8)	
1.5 m (5 ft)	kg													*13090	7480	8910	5010	6330	3640	5480	3150	8.25	
	lb													*28860	16490	19640	11050	13960	8020	12080	6940	(27.1)	
Ground Line	kg																						
	lb																						
-1.5 m (-5 ft)	kg																						
	lb																						
-3.0 m (-10 ft)	kg																						
	lb																						
-4.5 m (-15 ft)	kg																						
	lb																						

1. Lifting capacity are based on SAE J1097 and ISO 10567.
2. Lifting capacity of the HX series does not exceed 75% of tipping load with the machine on firm, level ground or 87% of full hydraulic capacity.

3. The load point is a hook located on the back of the bucket.
4. (*) indicates load limited by hydraulic capacity.

LIFTING CAPACITY

Rating over-front Rating over-side or 360 degrees

HX260 NL

5.85 m (19' 2") boom; 3.05 m (10' 0") arm equipped with 1.08 m³ (SAE heaped) bucket and 600 mm (24") triple grouser shoes.

Load point height m (ft)	Load radius										At max. reach			
	1.5 m (5 ft)		3.0 m (10 ft)		4.5 m (15 ft)		6.0 m (20 ft)		7.5 m (25 ft)		Capacity		Reach m (ft)	
7.5 m (25 ft)	kg										*4020	*4020	6.62	
	lb										*8860	*8860	(21.7)	
6.0 m (20 ft)	kg								*4610	4040	*3770	*3770	7.68	
	lb								*10160	8910	*8310	*8310	(25.2)	
4.5 m (15 ft)	kg					*6540	5730		*6120	3960	*3720	3270	8.33	
	lb					*14420	12630		*13490	8730	*8200	7210	(27.3)	
3.0 m (10 ft)	kg				*9970	8290		*7710	5380	6520	3790	*3830	2970	8.67
	lb				*21980	18280		*17000	11860	14370	8360	*8440	6550	(28.4)
1.5 m (5 ft)	kg				*12300	7580		*8920	5030	6320	3620	*4080	2840	8.74
	lb				*27120	16710		*19670	11090	13930	7980	*8990	6260	(28.7)
Ground Line	kg			*6220	*6220	*13630	7200	8670	4790	6170	3480	*4550	2880	8.54
	lb			*13710	*13710	*30050	15870	19110	10560	13600	7670	*10030	6350	(28.0)
-1.5 m (-5 ft)	kg	*7030	*7030	*11040	*11040	13780	7080	8530	4670	6110	3430	*5370	3110	8.06
	lb	*15500	*15500	*24340	*24340	30380	15610	18810	10300	13470	7560	*11840	6860	(26.5)
-3.0 m (-10 ft)	kg	*11970	*11970	*17390	14080	*13300	7140	8560	4700			6500	3660	7.24
	lb	*26390	*26390	*38340	31040	*29320	15740	18870	10360			14330	8070	(23.8)
-4.5 m (-15 ft)	kg			*16120	14540	*11410	7390					*8170	5000	5.93
	lb			*35540	32060	*25150	16290					*18010	11020	(19.5)

5.85 m (19' 2") boom; 3.60 m (11' 10") arm equipped with 1.08 m³ (SAE heaped) bucket and 600 mm (24") triple grouser shoes.

Load point height m (ft)	Load radius										At max. reach					
	1.5 m (5 ft)		3.0 m (10 ft)		4.5 m (15 ft)		6.0 m (20 ft)		7.5 m (25 ft)		9.0 m (30 ft)		Capacity		Reach m (ft)	
7.5 m (25 ft)	kg												*3480	*3480	7.28	
	lb												*7670	*7670	(23.9)	
6.0 m (20 ft)	kg									*5120	4120		*3280	*3280	8.25	
	lb									*11290	9080		*7230	*7230	(27.1)	
4.5 m (15 ft)	kg					*5840	5830			*5570	4000		*3250	2930	8.86	
	lb					*12870	12850			*12280	8820		*7170	6460	(29.1)	
3.0 m (10 ft)	kg					*8870	8510			*6200	3810	*4210	2770	*3330	2670	9.18
	lb					*19550	18760			*13670	8400	*9280	6110	*7340	5890	(30.1)
1.5 m (5 ft)	kg					*11400	7700			*8370	5060	6320	3610	4740	2680	9.25
	lb					*25130	16980			*18450	11160	13930	7960	10450	5910	(30.3)
Ground Line	kg			*7000	*7000	*13090	7180	8650	4760	6130	3440	*4350	2610	*3900	2580	9.06
	lb			*15430	*15430	*28860	15830	19070	10490	13510	7580	*9590	5750	*8600	5690	(29.7)
-1.5 m (-5 ft)	kg	*6330	*6330	*10380	*10380	13670	6970	8460	4590	6030	3340			*4520	2750	8.61
	lb	*13960	*13960	*22880	*22880	30140	15370	18650	10120	13290	7360			*9960	6060	(28.3)
-3.0 m (-10 ft)	kg	*10310	*10310	*15300	13720	*13530	6970	8430	4570	6040	3350			5670	3160	7.85
	lb	*22730	*22730	*33730	30250	*29830	15370	18580	10080	13320	7390			12500	6970	(25.8)
-4.5 m (-15 ft)	kg	*15330	*15330	*17620	14120	*12200	7150	8580	4700					7350	4100	6.66
	lb	*33800	*33800	*38850	31130	*26900	15760	18920	10360					16200	9040	(21.9)
-6.0 m (-20 ft)	kg															
	lb															

1. Lifting capacity are based on SAE J1097 and ISO 10567.
2. Lifting capacity of the HX series does not exceed 75% of tipping load with the machine on firm, level ground or 87% of full hydraulic capacity.

3. The load point is a hook located on the back of the bucket.
4. (*) indicates load limited by hydraulic capacity.

LIFTING CAPACITY

Rating over-front Rating over-side or 360 degrees

HX260 L HIGH WALKER

5.85 m (19' 2") boom; 2.10 m (6' 11") arm equipped with 1.08 m³ (SAE heaped) bucket and 600 mm (24") triple grouser shoes.

Load point height m (ft)	Load radius										At max. reach					
	3.0 m (10 ft)		4.5 m (15 ft)		6.0 m (20 ft)		7.5 m (25 ft)		Capacity		Reach m (ft)					
7.5 m (25 ft)	kg											*7200	*7200	5.87		
	lb											*15870	*15870	(19.2)		
6.0 m (20 ft)	kg									*7090	*7090		*7110	5850	6.96	
	lb									*15630	*15630		*15670	12900	(22.8)	
4.5 m (15 ft)	kg					*9810	*9810			*7870	7240	*7200	5100	*7200	4990	7.60
	lb					*21630	*21630			*17350	15960	*15870	11240	*15870	11000	(24.9)
3.0 m (10 ft)	kg									*8950	6910	*7570	4970	7020	4590	7.90
	lb									*19730	15230	*16690	10960	15480	10120	(25.9)
1.5 m (5 ft)	kg									*9880	6640	*7480	4850	6920	4500	7.91
	lb									*21780	14640	16490	10690	15260	9920	(25.9)
Ground Line	kg			*14070	9920	*10320	6500	7420	4790					7270	4700	7.62
	lb			*31020	21870	*22750	14330	16360	10560					16030	10360	(25.0)
-1.5 m (-5 ft)	kg			*13500	9980	*10090	6510							8270	5310	6.99
	lb			*29760	22000	*22240	14350							18230	11710	(22.9)
-3.0 m (-10 ft)	kg	*16020	*16020	*11850	10200									*8570	6840	5.93
	lb	*35320	*35320	*26120	22490									*18890	15080	(19.4)

5.85 m (19' 2") boom; 2.50 m (8' 2") arm equipped with 1.08 m³ (SAE heaped) bucket and 600 mm (24") triple grouser shoes.

Load point height m (ft)	Load radius										At max. reach					
	3.0 m (10 ft)		4.5 m (15 ft)		6.0 m (20 ft)		7.5 m (25 ft)		Capacity		Reach m (ft)					
7.5 m (25 ft)	kg									*6470	*6470		*5950	*5950	6.29	
	lb									*14260	*14260		*13120	*13120	(20.6)	
6.0 m (20 ft)	kg									*6600	*6600		*5610	5440	7.32	
	lb									*14550	*14550		*12370	11990	(24.0)	
4.5 m (15 ft)	kg					*9090	*9090			*7450	7310	*6780	5140	*5590	4680	7.93
	lb					*20040	*20040			*16420	16120	*14950	11330	*12320	10320	(26.0)
3.0 m (10 ft)	kg					*11610	10670			*8590	6960	*7280	4990	*5810	4330	8.22
	lb					*25600	23520			*18940	15340	*16050	11000	*12810	9550	(27.0)
1.5 m (5 ft)	kg					*13420	10110			*9620	6660	*7480	4840	*6280	4240	8.22
	lb					*29590	22290			*21210	14680	16490	10670	*13850	9350	(27.0)
Ground Line	kg			*14040	9900	*10220	6490	7390	4760					6800	4400	7.95
	lb			*30950	21830	*22530	14310	16290	10490					14990	9700	(26.1)
-1.5 m (-5 ft)	kg	*13280	*13280	*13730	9910	*10190	6460							7630	4910	7.35
	lb	*29280	*29280	*30270	21850	*22470	14240							16820	10820	(24.1)
-3.0 m (-10 ft)	kg	*17270	*17270	*12430	10090	*9140	6590							*8390	6120	6.35
	lb	*38070	*38070	*27400	22240	*20150	14530							*18500	13490	(20.8)

1. Lifting capacity are based on SAE J1097 and ISO 10567.
2. Lifting capacity of the HX series does not exceed 75% of tipping load with the machine on firm, level ground or 87% of full hydraulic capacity.

3. The load point is a hook located on the back of the bucket.
4. (*) indicates load limited by hydraulic capacity.

LIFTING CAPACITY

Rating over-front Rating over-side or 360 degrees

HX260 L HIGH WALKER

5.85 m (19' 2") boom; 3.05 m (10' 0") arm equipped with 1.08 m³ (SAE heaped) bucket and 600 mm (24") triple grouser shoes.

Load point height m (ft)	Load radius										At max. reach		
	1.5 m (5 ft)		3.0 m (10 ft)		4.5 m (15 ft)		6.0 m (20 ft)		7.5 m (25 ft)		Capacity	Reach	
7.5 m (25 ft)	kg										*3930	*3930	6.92
	lb										*8660	*8660	(22.7)
6.0 m (20 ft)	kg								*5300	5290	*3740	*3740	7.87
	lb								*11680	11660	*8250	*8250	(25.8)
4.5 m (15 ft)	kg					*6800	*6800		*6240	5170	*3740	*3740	8.44
	lb					*14990	*14990		*13760	11400	*8250	*8250	(27.7)
3.0 m (10 ft)	kg					*10600	*10600		*8020	7020	*6830	5000	8.71
	lb					*23370	*23370		*17680	15480	*15060	11020	(28.6)
1.5 m (5 ft)	kg					*12730	10190		*9180	6670	*7460	4820	8.72
	lb					*28060	22470		*20240	14700	*16450	10630	(28.6)
Ground Line	kg												8.45
	lb												(27.7)
-1.5 m (-5 ft)	kg	*8200	*8200	*12390	*12390	*13860	9790		*10190	6370	7290	4660	7.90
	lb	*18080	*18080	*27320	*27320	*30560	21580		*22470	14040	16070	10270	(25.9)
-3.0 m (-10 ft)	kg	*13310	*13310	*18640	*18640	*12990	9900		*9610	6430			6.98
	lb	*29340	*29340	*41090	*41090	*28640	21830		*21190	14180			(22.9)
-4.5 m (-15 ft)	kg												5.50
	lb												(18.0)

5.85 m (19' 2") boom; 3.60 m (11' 10") arm equipped with 1.08 m³ (SAE heaped) bucket and 600 mm (24") triple grouser shoes.

Load point height m (ft)	Load radius										At max. reach				
	1.5 m (5 ft)		3.0 m (10 ft)		4.5 m (15 ft)		6.0 m (20 ft)		7.5 m (25 ft)		9.0 m (30 ft)		Capacity	Reach	
7.5 m (25 ft)	kg												*3410	*3410	7.56
	lb												*7520	*7520	(24.8)
6.0 m (20 ft)	kg												*3260	*3260	8.43
	lb												*7190	*7190	(27.7)
4.5 m (15 ft)	kg												*3260	*3260	8.96
	lb												*7190	*7190	(29.4)
3.0 m (10 ft)	kg												*3370	*3370	9.22
	lb												*7430	*7430	(30.3)
1.5 m (5 ft)	kg												*3610	3490	9.23
	lb												*7960	7690	(30.3)
Ground Line	kg												*4020	3580	8.98
	lb												*8860	7890	(29.5)
-1.5 m (-5 ft)	kg	*7250	*7250	*11420	*11420	*13790	9660		*10060	6280	7200	4570	*4740	3870	8.46
	lb	*15980	*15980	*25180	*25180	*30400	21300		*22180	13850	15870	10080	*10450	8530	(27.8)
-3.0 m (-10 ft)	kg	*11400	*11400	*16820	*16820	*13320	9710		*9830	6280	7250	4620	*6100	4530	7.61
	lb	*25130	*25130	*37080	*37080	*29370	21410		*21670	13850	15980	10190	*13450	9990	(25.0)
-4.5 m (-15 ft)	kg												*7750	6090	6.29
	lb												*17090	13430	(20.6)

1. Lifting capacity are based on SAE J1097 and ISO 10567.

2. Lifting capacity of the HX series does not exceed 75% of tipping load with the machine on firm, level ground or 87% of full hydraulic capacity.

3. The load point is a hook located on the back of the bucket.

4. (*) indicates load limited by hydraulic capacity.

LIFTING CAPACITY

Rating over-front Rating over-side or 360 degrees

HX260 L 2-PIECE BOOM

5.90 m (19' 4") 2-piece boom; 2.10 m (6' 11") arm equipped with 1.08 m³ (SAE heaped) bucket and 600 mm (24") triple grouser shoes.

Load point height m (ft)	Load radius										At max. reach				
	3.0 m (10 ft)		4.5 m (15 ft)		6.0 m (20 ft)		7.5 m (25 ft)		9.0 m (30 ft)		Capacity	Reach			
9.0 m (30 ft)	kg												*12290	*12290	3.57
	lb												*27090	*27090	(11.7)
7.5 m (25 ft)	kg												*8890	7860	5.70
	lb												*19600	17330	(18.7)
6.0 m (20 ft)	kg												*7570	5700	6.89
	lb												*16690	12570	(22.6)
4.5 m (15 ft)	kg												*7020	4770	7.60
	lb												*15480	10520	(24.9)
3.0 m (10 ft)	kg												6670	4330	7.97
	lb												14700	9550	(26.1)
1.5 m (5 ft)	kg												6500	4200	8.04
	lb												14330	9260	(26.4)
Ground Line	kg												6720	4320	7.82
	lb												14820	9520	(25.6)
-1.5 m (-5 ft)	kg												7480	4790	7.28
	lb												16490	10560	(23.9)
-3.0 m (-10 ft)	kg														
	lb														

5.90 m (19' 4") 2-piece boom; 2.50 m (8' 2") arm equipped with 1.08 m³ (SAE heaped) bucket and 600 mm (24") triple grouser shoes.

Load point height m (ft)	Load radius										At max. reach				
	3.0 m (10 ft)		4.5 m (15 ft)		6.0 m (20 ft)		7.5 m (25 ft)		9.0 m (30 ft)		Capacity	Reach			
9.0 m (30 ft)	kg												*8650	*8650	4.28
	lb												*19070	*19070	(14.0)
7.5 m (25 ft)	kg												*7040	7000	6.17
	lb												*15520	15430	(20.2)
6.0 m (20 ft)	kg												*6500	5270	7.28
	lb												*14330	11620	(23.9)
4.5 m (15 ft)	kg												*6350	4470	7.96
	lb												*14000	9850	(26.1)
3.0 m (10 ft)	kg												6270	4080	8.31
	lb												13820	8990	(27.2)
1.5 m (5 ft)	kg												6110	3950	8.37
	lb												13470	8710	(27.5)
Ground Line	kg												6290	4040	8.16
	lb												13870	8910	(26.8)
-1.5 m (-5 ft)	kg												6910	4430	7.65
	lb												15230	9770	(25.1)
-3.0 m (-10 ft)	kg												*6510	5340	6.76
	lb												*14350	11770	(22.2)

1. Lifting capacity are based on SAE J1097 and ISO 10567.

2. Lifting capacity of the HX series does not exceed 75% of tipping load with the machine on firm, level ground or 87% of full hydraulic capacity.

3. The load point is a hook located on the back of the bucket.

4. (*) indicates load limited by hydraulic capacity.

LIFTING CAPACITY

Rating over-front Rating over-side or 360 degrees

HX260 L 2-PIECE BOOM

5.90 m (19' 4") 2-piece boom; 3.05 m (10' 0") arm equipped with 1.08 m³ (SAE heaped) bucket and 600 mm (24") triple grouser shoes.

Load point height m (ft)	Load radius										At max. reach	
	3.0 m (10 ft)		4.5 m (15 ft)		6.0 m (20 ft)		7.5 m (25 ft)		Capacity		Reach	
											m (ft)	
9.0 m (30 ft)	kg			*7440	*7440					*5450	*5450	5.21
	lb			*16400	*16400					*12020	*12020	(17.1)
7.5 m (25 ft)	kg					*7160	*7160			*4640	*4640	6.84
	lb					*15790	*15790			*10230	*10230	(22.4)
6.0 m (20 ft)	kg			*7950	*7950			*6160	5100	*4330	*4330	7.86
	lb			*17530	*17530	*16340	*16340	*13580	11240	*9550	*9550	(25.8)
4.5 m (15 ft)	kg	*14560	*14560	*9800	*9800	*7950	7170	*6350	5000	*4240	4020	8.48
	lb	*32100	*32100	*21610	*21610	*17530	15810	*14000	11020	*9350	8860	(27.8)
3.0 m (10 ft)	kg			*13840	10440	*8930	6770	*6710	4810	*4320	3700	8.81
	lb			*30510	23020	*19690	14930	*14790	10600	*9520	8160	(28.9)
1.5 m (5 ft)	kg			*16000	9650	10140	6390	*7180	4620	*4560	3580	8.87
	lb			*35270	21270	22350	14090	*15830	10190	*10050	7890	(29.1)
Ground Line	kg			15780	9250	9840	6130	7040	4480	*5000	3650	8.68
	lb			34790	20390	21690	13510	15520	9880	*11020	8050	(28.5)
-1.5 m (-5 ft)	kg	*11670	*11670	*14760	9160	9720	6020	6980	4430	*5790	3940	8.20
	lb	*25730	*25730	*32540	20190	21430	13270	15390	9770	*12760	8690	(26.9)
-3.0 m (-10 ft)	kg			*12240	9260	*9360	6070			*6510	4620	7.38
	lb			*26980	20410	*20640	13380			*14350	10190	(24.2)

HX260 NL 2-PIECE BOOM

5.90 m (19' 4") 2-piece boom; 2.10 m (6' 11") arm equipped with 1.08 m³ (SAE heaped) bucket and 600 mm (24") triple grouser shoes.

Load point height m (ft)	Load radius										At max. reach			
	3.0 m (10 ft)		4.5 m (15 ft)		6.0 m (20 ft)		7.5 m (25 ft)		9.0 m (30 ft)		Capacity		Reach	
													m (ft)	
9.0 m (30 ft)	kg											*12470	*12470	3.48
	lb											*27490	*27490	(11.4)
7.5 m (25 ft)	kg			*10110	*10110							*8940	7300	5.66
	lb			*22290	*22290							*19710	16090	(18.6)
6.0 m (20 ft)	kg			*10550	*10550	*8300	6660					*7590	5260	6.87
	lb			*23260	*23260	*18300	14680					*16730	11600	(22.5)
4.5 m (15 ft)	kg			*12540	9930	*8830	6400	*7080	4480			*7030	4380	7.59
	lb			*27650	21890	*19470	14110	*15610	9880			*15500	9660	(24.9)
3.0 m (10 ft)	kg					*9890	6050	*7300	4360			6660	3960	7.96
	lb					*21800	13340	*16090	9610			14680	8730	(26.1)
1.5 m (5 ft)	kg					10020	5750	7170	4220			6470	3820	8.04
	lb					22090	12680	15810	9300			14260	8420	(26.4)
Ground Line	kg					9830	5590	7090	4150			6680	3930	7.83
	lb					21670	12320	15630	9150			14730	8660	(25.7)
-1.5 m (-5 ft)	kg			*13250	8400	9820	5580					7420	4340	7.30
	lb			*29210	18520	21650	12300					16360	9570	(23.9)
-3.0 m (-10 ft)	kg					*7380	5750							
	lb					*16270	12680							

- Lifting capacity are based on SAE J1097 and ISO 10567.
- Lifting capacity of the HX series does not exceed 75% of tipping load with the machine on firm, level ground or 87% of full hydraulic capacity.

- The load point is a hook located on the back of the bucket.
- (*) indicates load limited by hydraulic capacity.

LIFTING CAPACITY

Rating over-front Rating over-side or 360 degrees

HX260 NL 2-PIECE BOOM

5.90 m (19' 4") 2-piece boom; 2.50 m (8' 2") arm equipped with 1.08 m³ (SAE heaped) bucket and 600 mm (24") triple grouser shoes.

Load point height m (ft)	Load radius										At max. reach			
	3.0 m (10 ft)		4.5 m (15 ft)		6.0 m (20 ft)		7.5 m (25 ft)		9.0 m (30 ft)		Capacity		Reach	
													m (ft)	
9.0 m (30 ft)	kg											*8730	*8730	4.21
	lb											*19250	*19250	(13.8)
7.5 m (25 ft)	kg			*8740	*8740	*7950	6760					*7070	6490	6.13
	lb			*19270	*19270	*17530	14900					*15590	14310	(20.1)
6.0 m (20 ft)	kg			*9070	*9070	*7910	6750					*6500	4860	7.26
	lb			*20000	*20000	*17440	14880					*14330	10710	(23.8)
4.5 m (15 ft)	kg			*11670	10130	*8450	6490	*6740	4530			*6350	4100	7.94
	lb			*25730	22330	*18630	14310	*14860	9990			*14000	9040	(26.1)
3.0 m (10 ft)	kg			*15250	9250	*9480	6120	*7050	4380			6260	3720	8.30
	lb			*33620	20390	*20900	13490	*15540	9660			13800	8200	(27.2)
1.5 m (5 ft)	kg			16060	8600	10070	5790	7180	4220			6090	3590	8.37
	lb			35410	18960	22200	12760	15830	9300			13430	7910	(27.5)
Ground Line	kg			15740	8340	9830	5580	7060	4120			6250	3670	8.17
	lb			34700	18390	21670	12300	15560	9080			13780	8090	(26.8)
-1.5 m (-5 ft)	kg	*11470	*11470	*14030	8330	9770	5530	7060	4120			6860	4010	7.66
	lb	*25290	*25290	*30930	18360	21540	12190	15560	9080			15120	8840	(25.1)
-3.0 m (-10 ft)	kg			*11040	8500	*8440	5640					*6550	4820	6.79
	lb			*24340	18740	*18610	12430					*14440	10630	(22.3)

5.90 m (19' 4") 2-piece boom; 3.05 m (10' 00") arm equipped with 1.08 m³ (SAE heaped) bucket and 600 mm (24") triple grouser shoes.

Load point height m (ft)	Load radius										At max. reach			
	3.0 m (10 ft)		4.5 m (15 ft)		6.0 m (20 ft)		7.5 m (25 ft)		Capacity		Reach			
											m (ft)			
9.0 m (30 ft)	kg			*7380	*7380							*5490	*5490	5.15
	lb			*16270	*16270							*12100	*12100	(16.9)
7.5 m (25 ft)	kg					*7110	6950					*4650	*4650	6.81
	lb					*15670	15320					*10250	*10250	(22.3)
6.0 m (20 ft)	kg			*7920	*7920	*7400	6870	*6080	4680			*4330	4300	7.83
	lb			*17460	*17460	*16310	15150	*13400	10320			*9550	9480	(25.7)
4.5 m (15 ft)	kg	*13630	*13630	*9620	*9620	*7930	6580	*6350	4580			*4240	3690	8.47
	lb	*30050	*30050	*21210	*21210	*17480	14510	*14000	10100			*9350	8140	(27.8)
3.0 m (10 ft)	kg			*13720	9490	*8890	6190	*6700	4400			*4320	3370	8.81
	lb			*30250	20920	*19600	13650	*14770	9700			*9520	7430	(28.9)
1.5 m (5 ft)	kg			*15980	8710	10110	5810	*7160	4210			*4550	3250	8.88
	lb			*35230	19200	22290	12810	*15790	9280			*10030	7170	(29.1)
Ground Line	kg			15730	8310	9810	5550	7010	4070			*4990	3310	8.68
	lb			34680	18320	21630	12240	15450	8970			*11000	7300	(28.5)
-1.5 m (-5 ft)	kg	*11500	*11500	*14820	8220	9690	5440	6950	4010			*5760	3570	8.21
	lb	*25350	*25350	*32670	18120	21360	11990	15320	8840			*12700	7870	(26.9)
-3.0 m (-10 ft)	kg			*12330	8310	*9430	5490					*6540	4170	7.41
	lb			*27180	18320	*20790	12100					*14420	9190	(24.3)

- Lifting capacity are based on SAE J1097 and ISO 10567.
- Lifting capacity of the HX series does not exceed 75% of tipping load with the machine on firm, level ground or 87% of full hydraulic capacity.

- The load point is a hook located on the back of the bucket.
- (*) indicates load limited by hydraulic capacity.

ENGINE	STD	OPT
Cummins QSB 6.7 engine	●	
HYDRAULIC SYSTEM		
Intelligent Power Control (IPC)		
3-power mode, 2-work mode, user mode	●	
Variable Power Control	●	
Pump Flow Control	●	
Attachment Mode Flow Control		●
Engine Auto Idle	●	
Engine Auto Shutdown Control		●
Electronic Fan Control	●	
CABIN & INTERIOR		
ISO Standard cabin		
Rise-up type windshield wiper	●	
Radio / USB player	●	
Handsfree mobile phone system with USB	●	
12 volt power outlet (24V DC to 12V DC converter)	●	
Electric horn	●	
All-weather steel cab with 360° visibility	●	
Safety glass windows	●	
Sliding fold-in front window	●	
Sliding side window (LH)	●	
Lockable door	●	
Hot & cool box	●	
Storage compartment & Ashtray	●	
Transparent cabin roof-cover	●	
Sun visor	●	
Door and cab locks, one key	●	
Mechanical suspension seat with heater	●	
Pilot-operated slidable joystick	●	
Console box height adjust system	●	
Automatic climate control		
Air conditioner & heater	●	
Defroster	●	
Starting Aid (air grid heater) for cold weather	●	
Centralized monitoring		
8" LCD display	●	
Engine speed or Trip meter/Accel.	●	
Engine coolant temperature gauge	●	
Max power	●	
Low speed/High speed	●	
Auto idle	●	
Overload	●	
Check Engine	●	
Air cleaner clogging	●	
Indicators	●	
ECO Gauges	●	
Fuel level gauge	●	
Hyd. oil temperature gauge	●	
Fuel warmer	●	
Warnings	●	
Communication error	●	
Low battery	●	
Clock	●	
Cabin lights		●
Cabin front window rain guard		●
Cabin roof-steel cover		●
Seat		
Adjustable air suspension seat with heater		●
Cabin FOPS/FOG (ISO/DIS 10262) Level 2		
FOPS (Falling Object Protective Structure) · ISO 3449 Level 2		●
FOG (Falling Object Guard)		●
Cabin ROPS (ISO 12117-2)		
ROPS (Roll Over Protective Structure)	●	

SAFETY	STD	OPT
Battery master switch	●	
Rearview camera	●	
AAVM (Advanced Around View Monitoring)		●
Four front working lights	●	
Travel alarm	●	
Rear work lamp	●	
Beacon lamp		●
Automatic swing brake	●	
Boom holding system	●	
Arm holding system	●	
Safety lock valve for boom cylinder with overload warning device	●	
Safety lock valve for arm cylinder		●
Swing Lock System		●
Three outside rearview mirrors	●	
OTHER		
Booms		
5.85 m; 19' 2" boom	●	
5.90 m; 19' 4" 2-piece boom		●
Arms		
2.1 m; 6' 11"		●
2.5 m; 8' 2"		●
3.05 m; 10' 0"	●	
3.60 m; 11' 10"		●
Removable clean-out dust net for cooler	●	
Removable reservoir tank	●	
Fuel pre-filter	●	
Fuel single warmer	●	
Fuel dual warmer		●
Self-diagnostics system	●	
Hi MATE (Remote Management System)	●	
Batteries (2 x 12 V x 100 Ah)	●	
Fuel filler pump (50 l/min)	●	
Single-acting piping kit (breaker, etc.)		●
Double-acting piping kit (clamshell, etc.)	●	
Rotating Piping Kit		●
Quick coupler piping		●
Quick coupler		●
Boom floating control		●
One Pedal Straight Travel System		●
Accumulator for lowering work equipment	●	
Pattern change valve (2 patterns)		●
Fine Swing Control System		●
Tool kit		●
UNDERCARRIAGE		
Lower frame under cover (Additional)	●	
Lower frame under cover (Normal)	●	
Track shoes		
Triple grouser shoes (600 mm; 24")	●	
Triple grouser shoes (700 mm; 28")		●
Triple grouser shoes (800 mm; 32")		●
Triple grouser shoes (900 mm; 36")		●
Double grouser shoes (700 mm; 28")		●
Track rail guard	●	
Full track rail guard high walker		●
SWING BEARING		
Swing bearing	●	
Swing bearing (High Walker)		●

STD = Standard
OPT = Optional

- * Standard and optional equipment may vary. Contact your Hyundai dealer for more information.
- The machine may vary according to International standards.
- * The photos may include attachments and optional equipment that are not available in your area.
- * Materials and specifications are subject to change without advance notice.
- * All imperial measurements rounded off to the nearest pound or inch.
- * The air conditioning system on this machine contains the fluorinated greenhouse gas refrigerant HFC-134a (Global Warming Potential = 1430). The system contains 0.7 kg of refrigerant which has a CO₂ equivalent of 1.001 metric tonne.



PLEASE CONTACT

Hyundai Construction Equipment Europe nv

Hyundailaan 4, 3980 Tessenderlo, Belgium Tel: (32) 14-56-2200 Fax: (32) 14-59-3405 www.hyundai.eu

EN - 2017.11 Rev 7