



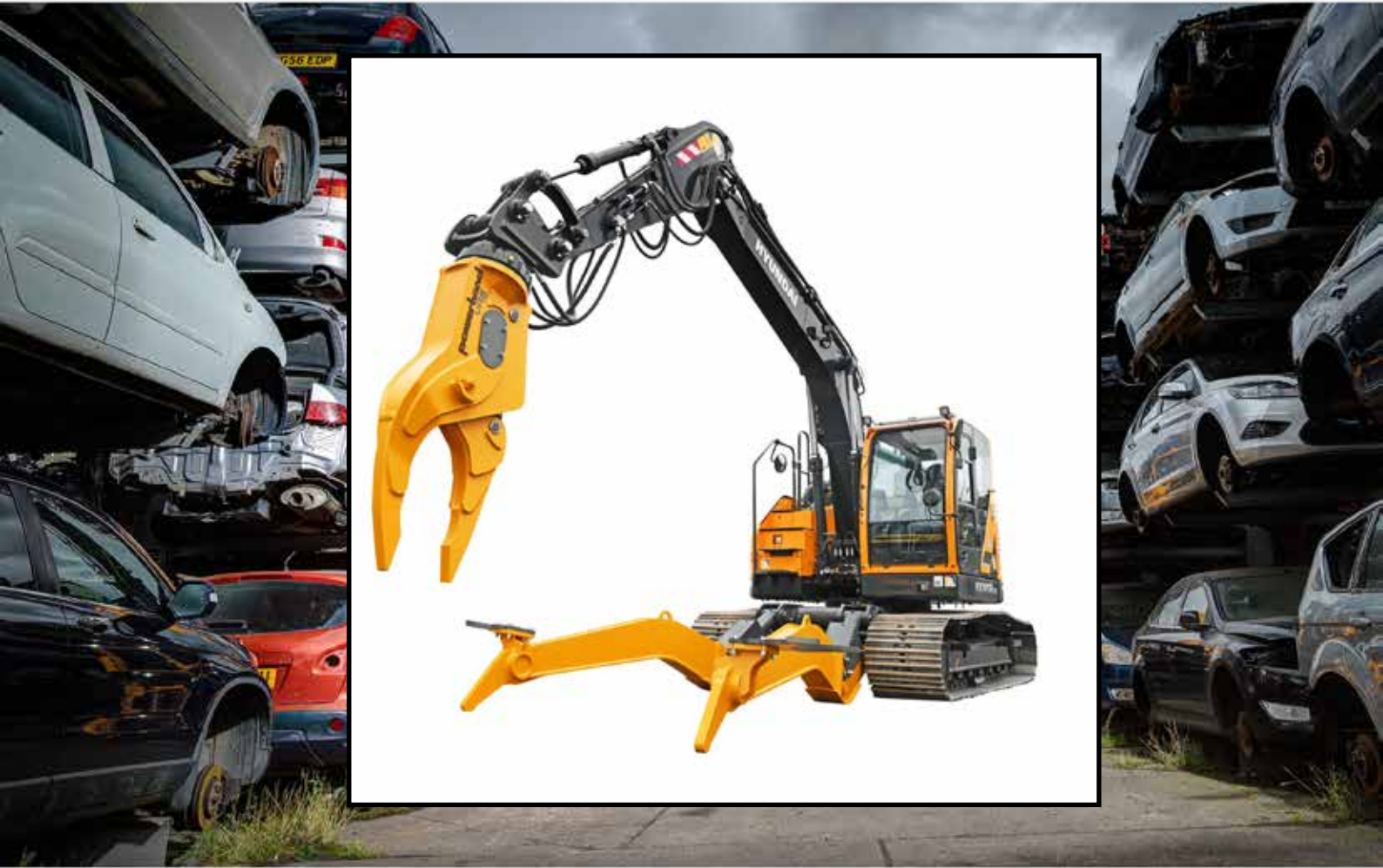
VEHICLE RECYCLING SYSTEM

HYUNDAI
HX145ALCR
powerhand®
VRS® 1410

TB Taylor & Braithwaite

Dyke Nook, Sandford
Appleby, Cumbria, CA16 6NS
Tel: 017683 41400
Web: www.t-and-b.co.uk

WELCOME TO THE FUTURE OF VEHICLE DISMANTLING



Traditional manual methods of removing high value materials from ELVs can be labour intensive and costly, in many cases making the process economically unviable. Although a four-tine scrap grab will allow extraction of the engine, much of the added value materials are left behind, resulting in the end of life vehicle dismantler missing out on great potential profit.

Like a vulture would dissect its prey, the VRS clamp arms pin down the vehicle to allow the grapple to systematically pull the valuable materials away from the lower value vehicle body shell.

The Powerhand VRS is the ultimate combination of power and dexterity. The grapple features a slender, plier like shape providing an unbroken line of sight from the operator to the vehicle, allowing valuable materials like the copper wiring loom to be extracted from even the tightest of areas. High power hydraulic cylinders and high torque rotation unit gives the VRS the power to effortlessly dissect the vehicle.

We understand that in a demanding, fast paced industry, productivity is paramount. That's why the VRS is built to work, all day, every day. Manufactured 100% from high strength Swedish alloy steels, meaning you can maximise your profits without the worry of downtime.



HYUNDAI HX145ALCR VRS[®] 140 SYSTEM

The Hyundai HX145ALCR excavator in conjunction with the Powerhand VRS140 has been introduced to meet the needs of recycling companies that process less than 3000 cars per year. Employing a lighter Dexterity Grapple than the larger VRS systems, the Powerhand VRS140 is fitted with clamp legs utilising an up and down clamping action.



- Hold down and clamp vehicles using the machine mounted clamp arms.
- Robust enough to handle heavy materials, yet the nimble jaws of the grapple allow easy removal of wiring looms, starter motors and alternators. Once the valuable wiring loom has been removed, use the multi-tool to strip off any unwanted electrical components.
- High performance rotation unit.
- Manufactured from high strength Swedish alloy steel.

HX145ALCR Excavator

Tier V Cummins / F3.5 (gross power 100 Kw (134 hp) at 2,200 rpm)

Operating weight: 16,465kg (without VRS attachment)

Boom: 4600mm; Arm: 2500mm

Boom and arm safety valves

Factory fitted proportional breaker/clamshell piping

Proportional rotation piping, Proportional RCV levers

700mm triple grouser steel tracks with bolt on rubber block pads

LED lights package: Boom and front/rear working lights

LED amber beacon

Rearview camera

ROPS /FOPS cabin with reinforced windscreen

Heated suspension seat, Air conditioning

Engine auto shutdown control with standard key

Radio/USB player with hands free phone connection

Fuel filler pump

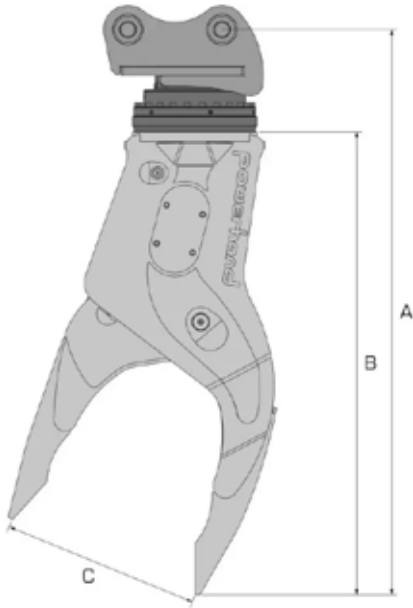
Hi-Mate remote management with 5 year subscription included

Full hydraulic modifications to optimise performance for VRS140 system

Dozer blade (removed and supplied loose)

2 years / 3,000 hour warranty

VRS140 System Dexterity Grapple



Requires two hydraulic services: Open/Close 300Bar, 80-120 l/min. Rotate 250Bar, 40 l/min

Weight (excluding mounting adaptor and rotator) 784kg

Overall Height A 2289mm

Attachment Height B 1875mm

Maximum Jaw Opening C 797mm

VRS140 System Clamp Legs

Clamp Legs: Raise/Lower 300Bar, 80-120 l/min

Weight (Excluding mounting adaptor and rotator) 1352kg

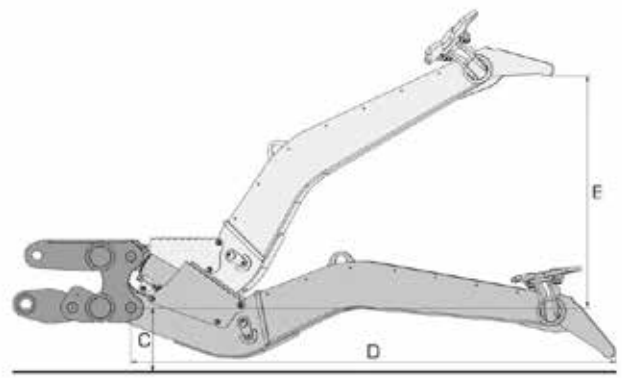
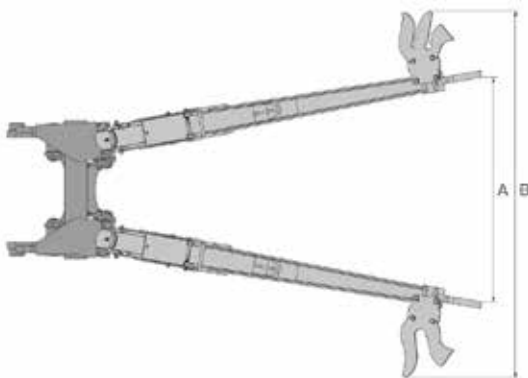
Width at Tips A 2034mm

Overall Width B 3313mm

Typical Mounting Height (Dependant on the machine mounting bracket) C 530-750mm

Overall Length (Excluding mounting adaptor) D 3455mm

Raised Height E 1656mm



Dyke Nook, Sandford,
Appleby, Cumbria, CA16 6NS
Tel: 017683 41400
Web: www.t-and-b.co.uk

